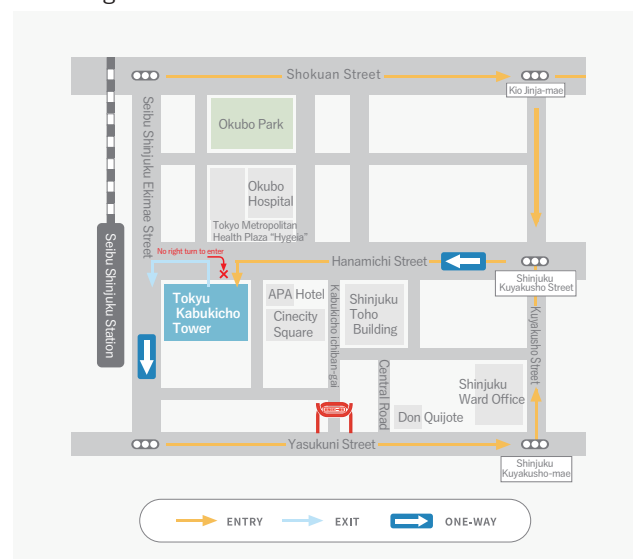


KABUKICHO TOWER TOKYU

FLOOR GUIDE

■Parking information



- Business hours: 24 hours
- Parking fee: 300 yen/30 minutes
- Maximum fee: Standard-sized and medium-roof cars and High-roof cars 1,800 yen for 12 hours after entry

※ The maximum parking fee for the first 12 hours after entry is 1,800 yen for standard-sized and medium-roof cars and high-roof cars.
 ※ The regular parking fee will be added if your parking exceeds 12 hours from the time of entry.
 ※ The fees include tax.

■Information on the bicycle and motorcycle parking

● Business hours: 05:00-01:00 of the next day	Bicycle parking	Upper stand/Free for 2 hours, 100 yen/12 hours Lower stand/Free for 2 hours, 100 yen/6 hours
	Motorcycle parking ※25cc or less	First hour free After that, 150 yen per hour, maximum charge 700 yen (up to 12 hours)

※Bicycles and motorcycles cannot enter or exit outside the opening hours.
 ※The above parking fees are charged outside the opening hours. ※The fees include tax.

■Access by train

- 1-minute walk from Seibu Shinjuku Station on the Seibu Shinjuku Line
- 6-minute walk from Shinjuku Nishiguchi Station on the Toei Oedo Line
- 7-minute walk from Shinjuku Station on the JR lines, the Odakyu Line, the Keio Line, and the Tokyo Metro Marunouchi Line
- 8-minute walk from Shinjuku-sanchome Station on the Tokyo Metro Marunouchi Line, the Fukutoshin Line, and the Toei Shinjuku Line

- Tokyu Kabukicho Tower website
<https://tokyu-kabukicho-tower.jp/>



Japanese



English



Simplified Chinese



Chinese



Korean

Online floor guide



Japanese

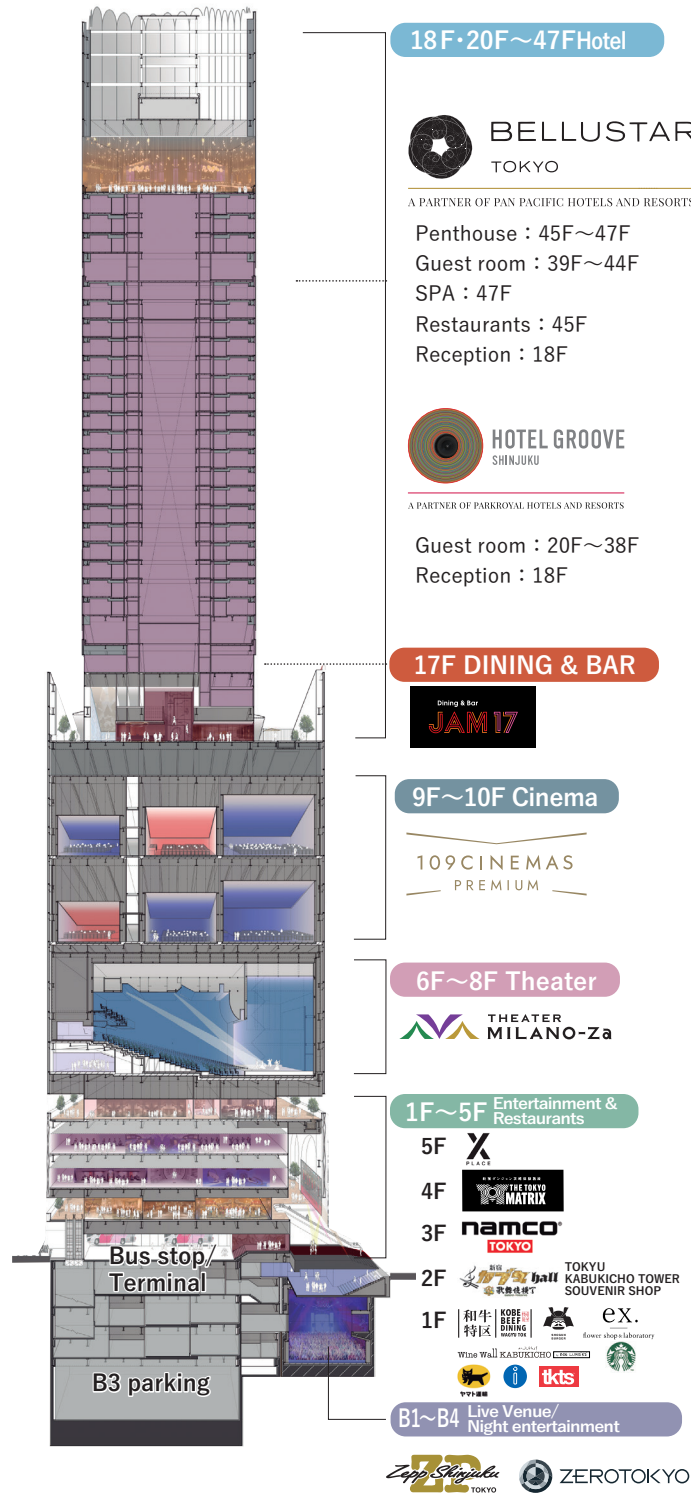


English

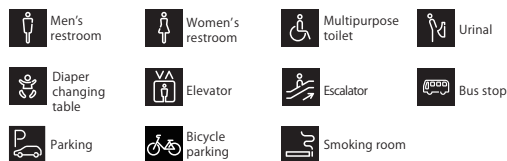
COLLABORATION PARTNER

Collaboration partners refer to the companies that agree to the Tokyu Kabukicho Tower's concept of "Pursuing your favorite things" and participate in the development, operation, and project of the facility.





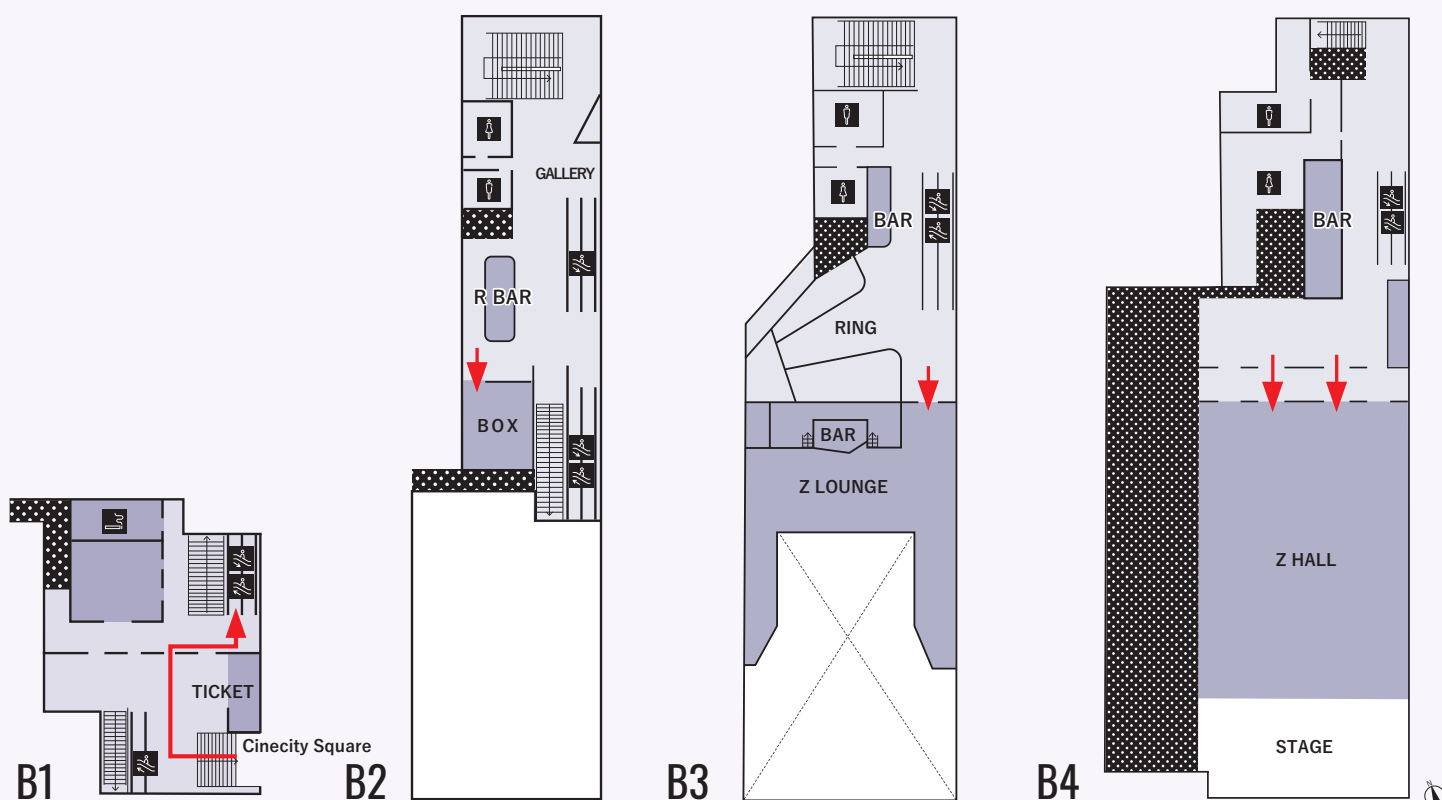
[Explanatory note]



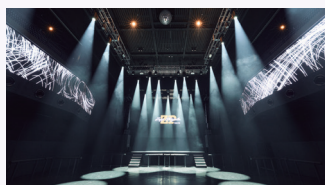
B1~B4

Live music hall/Night entertainment facility
Zepp Shinjuku (TOKYO) / ZEROTOKYO

Zepp Shinjuku (TOKYO) /ZEROTOKYO is a live music hall/night entertainment facility with a capacity for 1,500 visitors. It is one of the largest halls/facilities in the Shinjuku area. Abundant staging equipment that sets it above the other existing live music venues, such as 360-degree LED vision, laser and moving lights, allows a music experience that can only be felt here.



Zepp Shinjuku
TOKYO



Zepp Shinjuku (TOKYO)

■ Business hours : The hours may change subject to performance. Please contact the organizer.

■ Capacity : Standing room: 1,500 visitors
(B4 main floor: 1,337)(B3 Balcony: 163)
Seating: 530 seats
(A total of 693 visitors when the B3 balcony is used.)

ZEROTOKYO

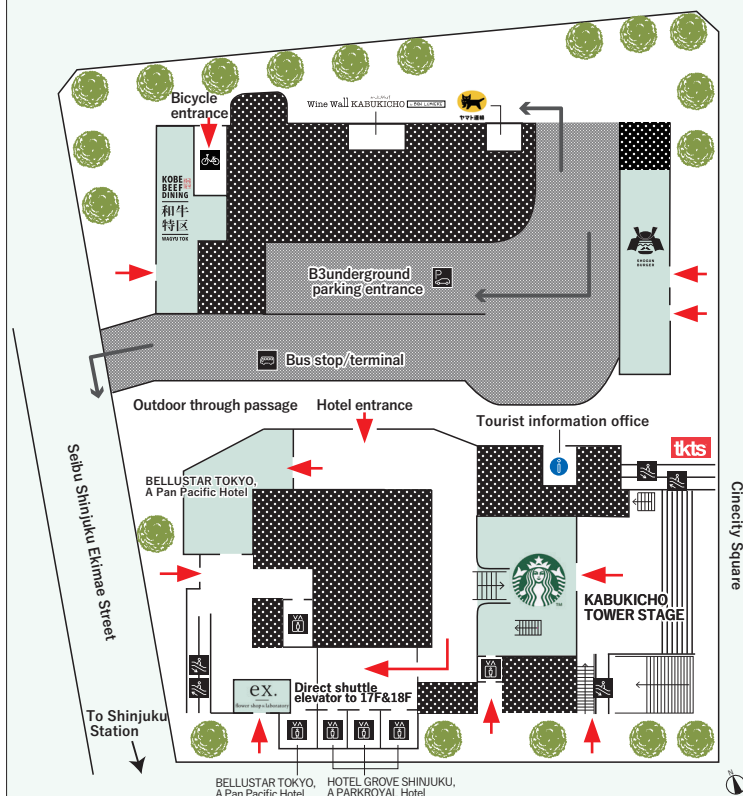


ZEROTOKYO

■ Business hours: 22:30~04:30 of the next day
※ Regular holidays: Tuesdays and Wednesdays
(excluding days before a national holiday)
(Holidays may change subject to event.)

1F | Entertainment & Restaurants

Cafes, restaurants, sweet shop, flower shop, etc. are located on this floor.



KOBE BEEF DINING WAGYU TOK

■ Business hours : 11:00~23:00 (L.O.22:00)
※15:30~17:00 CLOSE
■ TEL : 03-6233-8929



SPECIALITY COFFEE STORE STARBUCKS

■ Business hours : 7:00~22:00
■ TEL : 03-6278-9684

ex.

flower shop & laboratory

ex.flower shop & laboratory SHINJUKU

■ Business hours : 11:00~20:00
■ TEL : 03-6302-1322



Tourist information office

■ Business hours : 10:00~19:00



SHOGUN BURGER burger&beer

■ Business hours : 11:00~23:00 (L.O.22:00)
■ TEL : 03-6233-9629



Wine Wall KABUKICHO by BON LUMIERE

Japanese wine and skewered dishes
Wine Wall KABUKICHO by BON LUMIERE

■ Business hours : 17:00~23:00
■ TEL : 050-5210-5412



Parcel service YAMATO TRANSPORT

■ Business hours : 8:00~19:00
(Deadline for same-day shipping: 18:00)



Ticket sales tkts

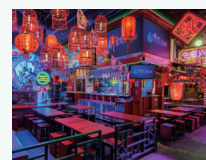
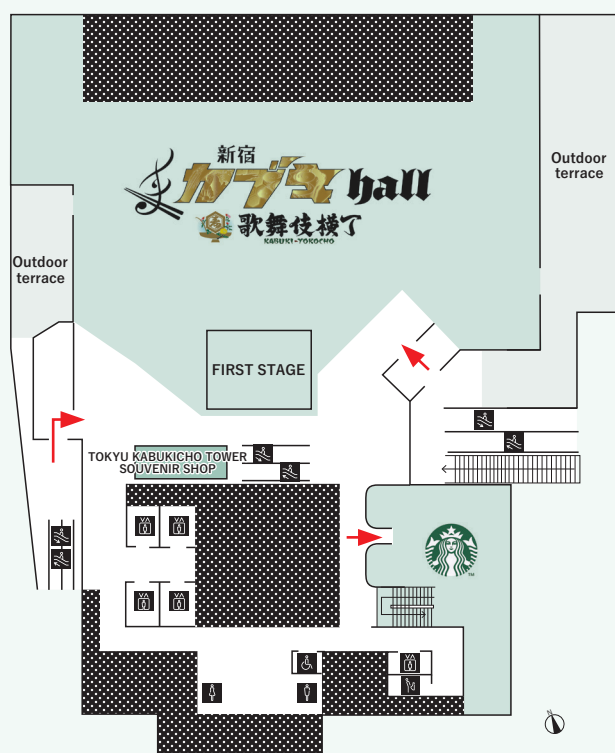
■ Business hours : 12:00~14:00 / 15:00~19:00
■ TEL : 03-6228-1062

※The business hours are subject to change without prior notice. For details, please refer to the official website.

2F | Entertainment & Restaurants

Entertainment Food Hall
Shinjuku Kabuki Hall – Kabuki Yokocho

This is a next-generation entertainment food hall in Kabukicho. The hall integrates food, music, and video in an area of about 1,000m² with the theme of “festival.” With various performances and events, the hall is an experiential space that transcends the traditional framework of restaurant districts.



Shinjuku Kabuki Hall – Kabuki Yokocho

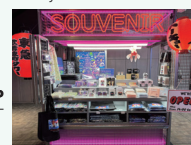
■ Business hours : 6:00~5:00 of the next day
* Time to prepare for opening is set for a part of the area (Food Festival). For details, please contact the restaurant.

■ TEL
Hokkaido Food Festival: 03-6302-1668 Tohoku Food Festival: 03-6302-1147 Yokohama Chuka Food Festival: 03-6302-1388
Kanto Food Festival: 03-6302-1489 KABUKI CAFE: 03-6380-2344 Chubu Food Festival: 03-6380-2567
Chu-Shikoku Food Festival: 03-6380-2459 Kinki Food Festival: 03-6380-3679 Kyushu & Okinawa Food Festival: 03-6380-2566
Korean Food Festival: 03-6380-3567



TOKYU KABUKICHO TOWER SOUVENIR SHOP

■ Business hours : 14:00~22:00



※The business hours are subject to change without prior notice. For details, please refer to the official website.

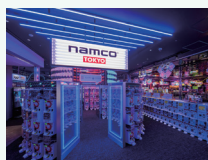
3F | Entertainment & Restaurants

amusement complex **namco TOKYO**

This is a space that integrates amusement, food, events, etc. with the concept of “Play, drink, and connect.” There is also an entertaining café bar where customers can enjoy alcohol beverages, delicious light meals that can only be tasted here, etc.



namco
TOKYO



©MIRAIKOMACHI PROJECT

namco TOKYO

■ Business hours : Monday to Thursday: 11:00 ~ 23:00
Fridays, Saturdays, Sundays, and the day
before public holidays: 11:00 ~ 25:00

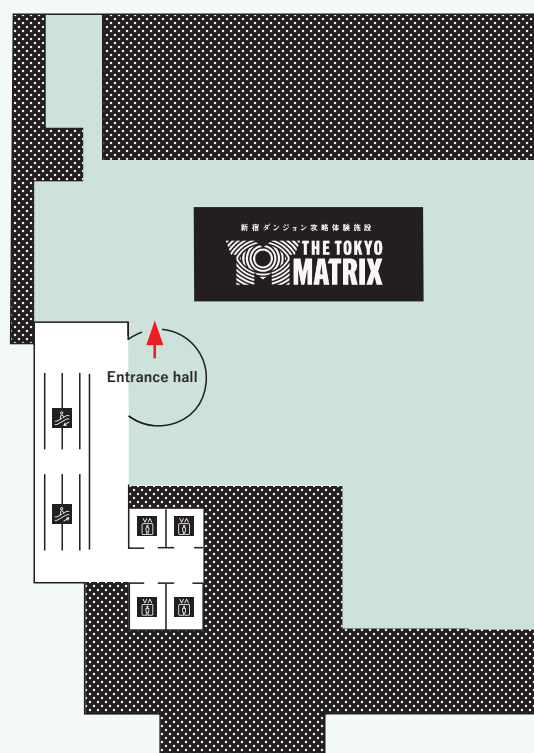
■ TEL : 03-6302-1311

※The business hours are subject to change without prior notice. For details, please refer to the official website.

4F | Entertainment & Restaurants

Dungeon experience facility in Shinjuku
THE TOKYO MATRIX

A huge dungeon has appeared in Shinjuku. This is a never-before-seen attraction where visitors beat monsters, look for items, and clear traps in cooperation with their partners. It provides an experience that is beyond your imagination. An adventure story just for you begins beyond the challenge.



新宿ダンジョン攻略体験施設
**THE TOKYO
MATRIX**



©Sony Music Solutions Inc. All rights reserved. ©2020 川原 礫 /KADOKAWA/SAO-P Project

THE TOKYO MATRIX

■ Business hours : 11 : 00 ~ 23 : 00 (Final reception/Paid continue: 22:00)

※The business hours are subject to change without prior notice. For details, please refer to the official website.

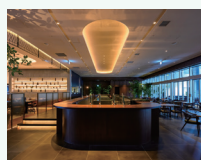
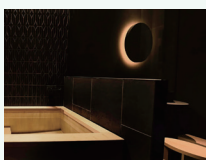
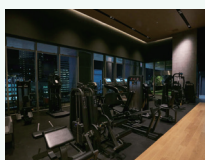
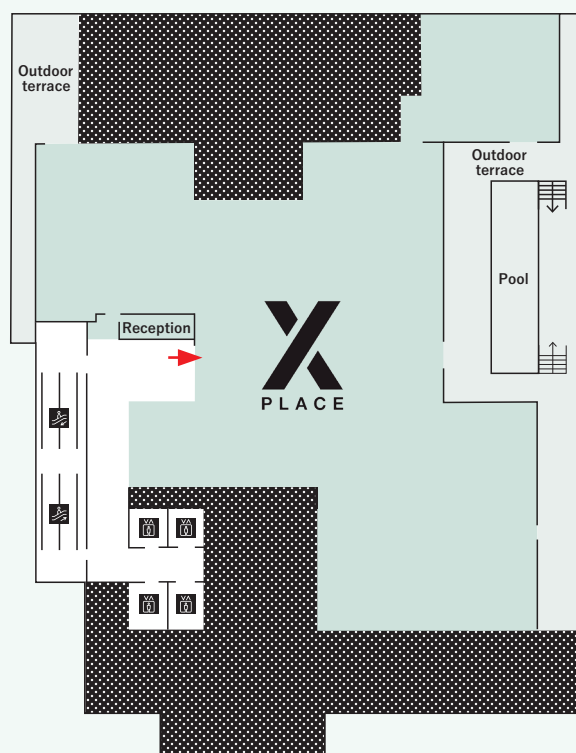
5F

Gym/Sauna & Restaurant

X PLACE X GYM X LOUNGE X POOL X CASINO prus sauna

Syabuki GRAN ALEGRIA

This floor offers a third place for guests with a fitness gym (personal trainer and golf simulator also available), a private sauna which accommodates one to up to four guests, a lounge where guests can enjoy social exchange and meet ups, and a restaurant.



X PLACE

■ TEL : 080-4406-5880 (Gym / Sauna/Lounge/Amusement Casino)

■ TEL : 03-6273-8115 (Restaurants)

■ Business hours :

X GYM·X LOUNGE 8 : 00 ~ 23 : 00 (Last entry 22 : 00)

GRAN ALEGRIA Weekdays 17:00 ~ 22:30 / Sat, Sun, and national holidays 11:30 ~ 22:30

Syabuki Weekdays 17:00 ~ 22:30 / Sat, Sun, and national holidays 11:30 ~ 22:30

prus sauna 8 : 00 ~ 5 : 00 of the next day

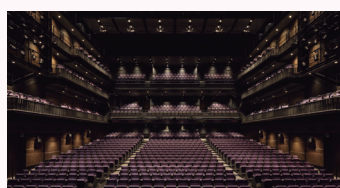
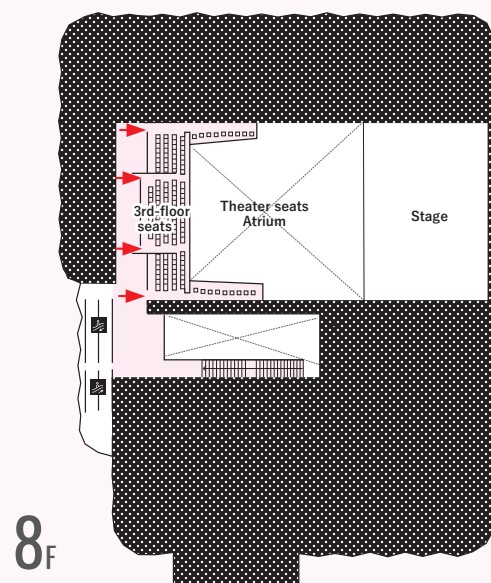
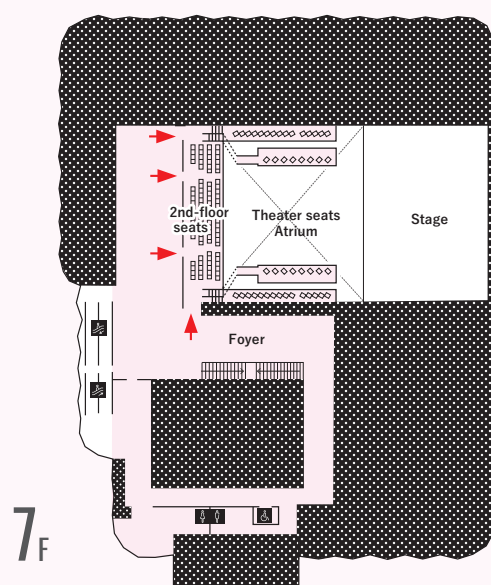
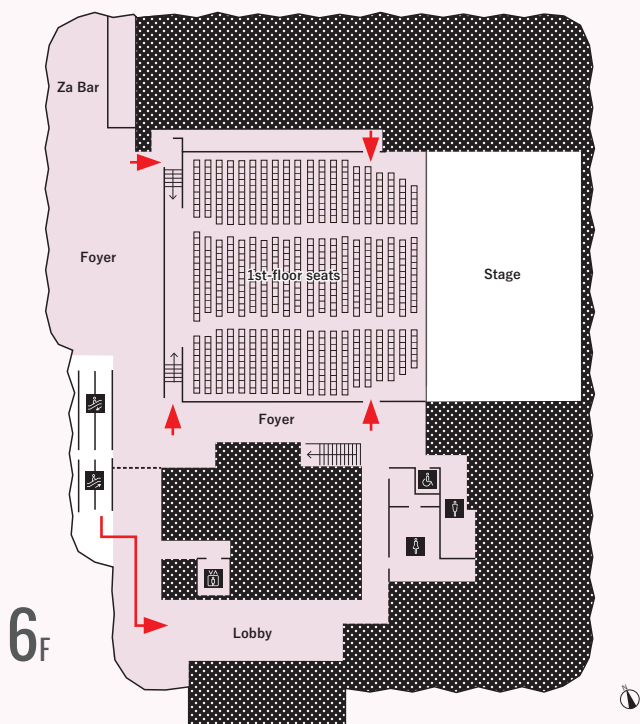
X POOL Weekdays 8:00 ~ 16:00 (Last entry 15 : 00) / national holidays 8:00 ~ 10:30 (Last entry 9 : 30)

X CASINO Weekdays 17:00 ~ 23:00 / Sat, Sun, and national holidays 14:00 ~ 23:00

6_F~8_F

Theater THEATER MILANO-Za

This is a live entertainment theater called Shinjuku MILANO-Za that developed with Kabukicho. Various entertainment content, such as dramas, music and videos, are offered in the 900-seat venue where artists and the audience can feel each other's heartbeat and breath.



THEATER MILANO-Za

- Number of seats : 907 (Basic layout)
- 1st-floor seats: 612 2nd-floor seats: 148 (Balcony seats: 50)
- 3rd-floor seats: 147 (Balcony seats: 18) (including the wheelchair area)

※The number of seats can be increased to up to 1,088.

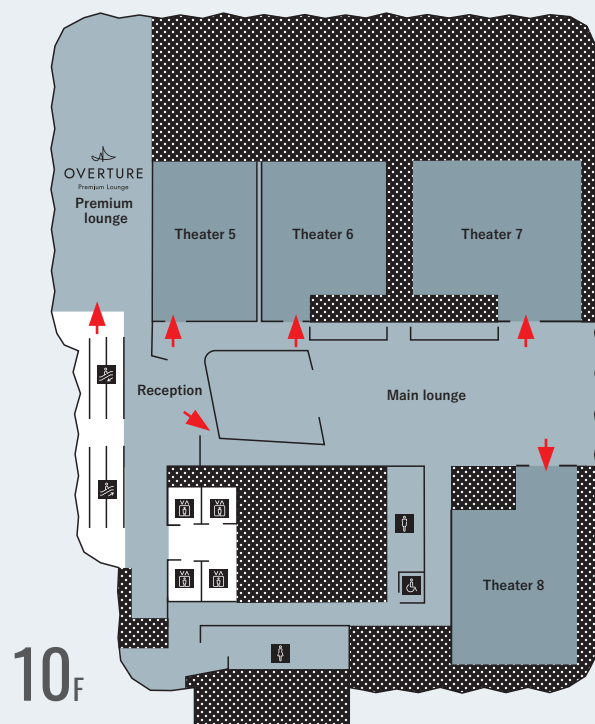
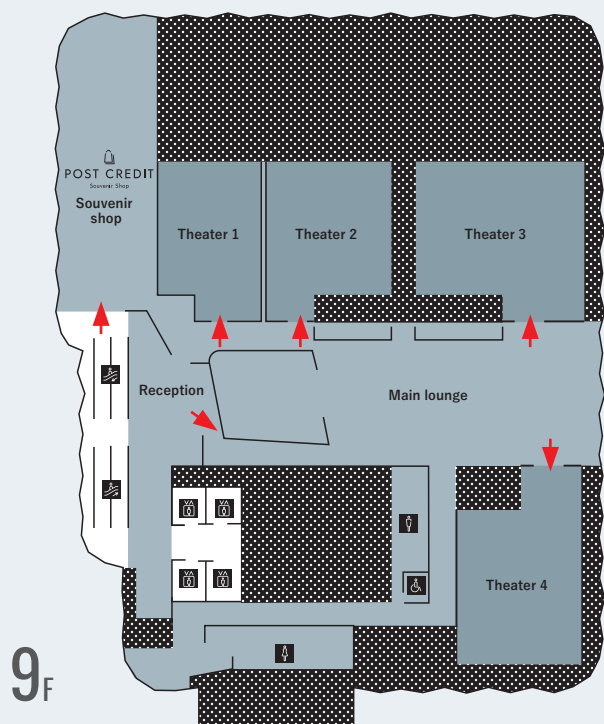
※The above shows the basic layout. The seating layout may change depending on the performance.

9_F~10_F

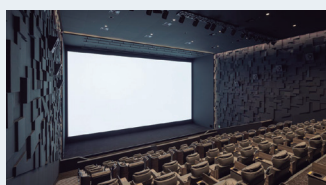
Cinema 109 CINEMAS PREMIUM SHINJUKU

“109 CINEMAS PREMIUM” is a new brand from “109 CINEMAS.” In addition to all-premium seating and high-spec projection equipment, all theaters are equipped with “SAION-SR EDITION-,” an audio system created under the supervision of Ryuichi Sakamoto.

We provide a high-quality viewing environment and hospitality to deliver an immersive experience in extraordinary worlds as a "sensory-opening cinema" that overturns conventional wisdom.



109 CINEMAS PREMIUM



Theater 1

■ Number of seats : 70

Theater 2

■ Number of seats : 98



Theater 3 **Dolby Atmos**

■ Number of seats : 142

Theater 4

■ Number of seats : 75



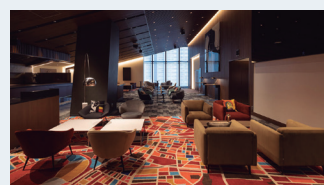
Theater 5

■ Number of seats : 70

Theater 6 **SCREEN X**

■ Number of seats : 98

In addition to the front screen, the theater adopts the three-sided, wide-view theater “ScreenX” on which the image is projected onto the right and left walls.

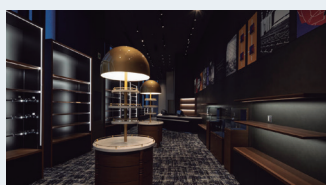


Theater 7

■ Number of seats : 124

Theater 8

■ Number of seats : 75



POST CREDIT
Souvenir Shop

Souvenir shop POST CREDIT

■ Business hours : 10:00 ~ 22:00

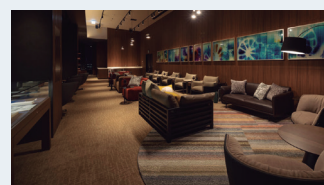
※Please note that the opening hours may vary depending on the day.

OVERTURE
Premium Lounge

Premium lounge OVERTURE

■ Business hours : 10:00 ~ 25:00

※Please note that the opening hours may vary depending on the day.
※The premium lounge may be unavailable due to private use, etc.

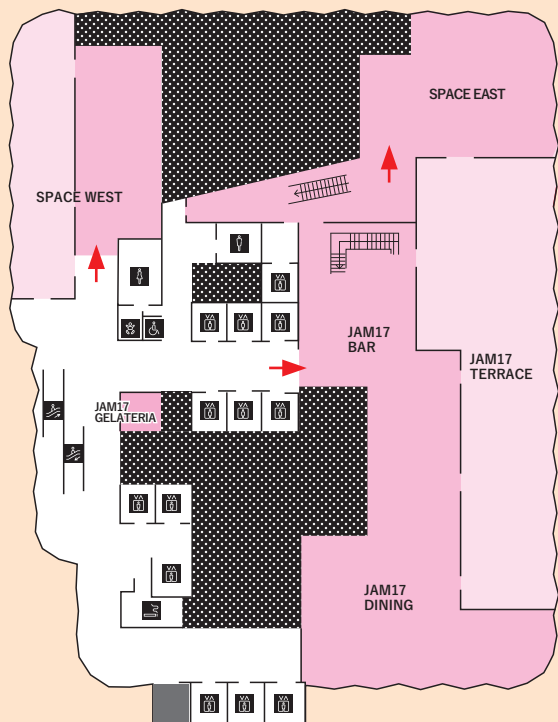


※The business hours are subject to change without prior notice. For details, please refer to the official website.

17_F

JAM17 DINING/BAR/GELATERIA/ SPACE EAST/SPACE WEST/TERRACE

JAM17 is the floor where the charm of this town's diversity and different values meet. It is a new social gathering place, where people come together by chance and continue to radiate new energy out into the world as they interact with each other's emotions in a nonconventional way, like a jam session.



JAM17 DINING

■ Business hours : Lunch 11 : 30 ~ 14 : 00
Tea time 14 : 00 ~ 17 : 00
Dinner 17 : 00 ~ 22 : 00 (L.O. 21 : 00)
■ TEL : 03-6233-8217
■ Number of seats : 132



JAM17 GELATERIA

■ Business hours : 10:00 ~ 22:00 ■ TEL : 03-6233-8217



JAM17 BAR

■ Business hours : 17:00 ~ 26:00 (L.E. 25:00)
■ TEL : 03-6233-8217
■ Number of seats : 11 seats + standing room

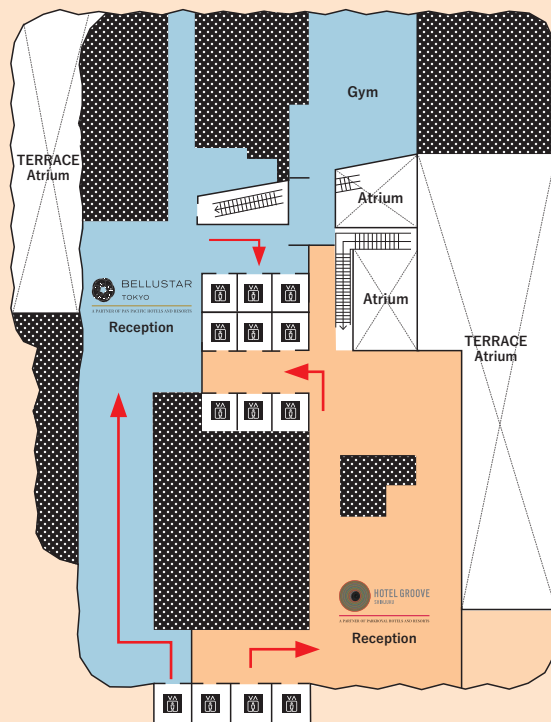


JAM17 TERRACE

18_F

Hotel Reception BELLUSTAR TOKYO, A Pan Pacific Hotel HOTEL GROOVE SHINJUKU, A PARKROYAL Hotel

“BELLUSTAR TOKYO, A Pan Pacific Hotel” is an urban luxury hotel where guests can enjoy a special space away from the hustle and bustle outside. “HOTEL GROOVE SHINJUKU, A PARKROYAL Hotel” is a life style hotel that serves as the base to enjoy downtown Kabukicho to the full.



A PARTNER OF PAN PACIFIC HOTELS AND RESORTS

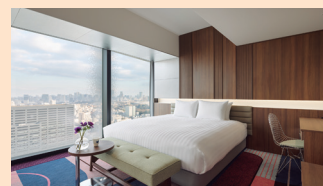


BELLUSTAR TOKYO, A Pan Pacific Hotel

■ Guest room floors : 18F ~ 39F ~ 47F
■ Room area : 42㎡ ~ 82㎡
(45F ~ 47F : 113㎡ ~ 277㎡)
■ Number of rooms : 97



A PARTNER OF PARKROYAL HOTELS AND RESORTS



HOTEL GROOVE SHINJUKU, A PARKROYAL Hotel

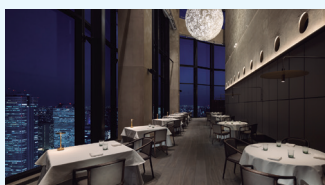
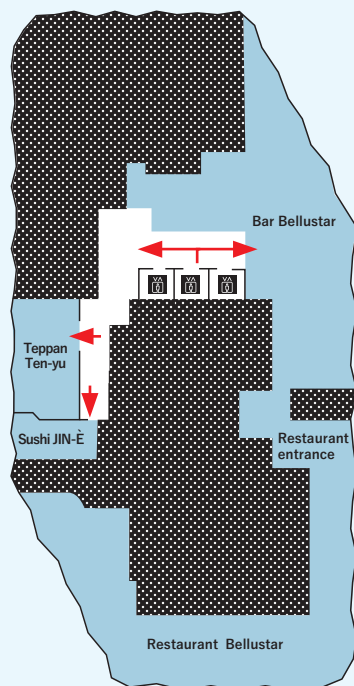
■ Guest room floors : 18F ~ 20F ~ 38F
■ Room area : 21㎡ ~ 61㎡
■ Number of rooms : 538

※The business hours are subject to change without prior notice. For details, please refer to the official website.

45_F

Restaurants & Bar Restaurant Bellustar/Bar Bellustar Teppan Ten-yu/Sushi JIN-È

In addition to a restaurant with a stunning view from the three-story atrium, there is also a bar, teppanyaki restaurant, and sushi restaurant. This floor offers unforgettable food experiences with innovative cuisine and services that keep changing with the times.



Restaurant Bellustar

■ Business hours : Lunch 12:00 ~ 15:00 (L.O. 14:00)
Dinner 17:30 ~ 22:00 (L.O. 21:00)
■ TEL : 03-6233-7388
■ Number of seats : 36 (including a private room for 8 customers)



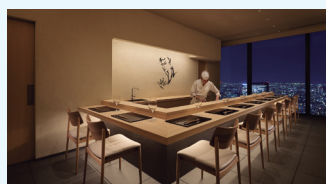
Bar Bellustar

■ Business hours : Weekdays 17:00 ~ 24:00 (L.O. 23:30)
Saturdays, Sundays, and national holidays : 13:30 ~ 24:00 (L.O. 23:30)
■ TEL : 03-6233-8455
■ Number of seats : 58



Teppan Ten-yu

■ Business hours : Lunch 12:00 ~ 15:00 (L.O. 14:00)
Dinner 17:30 ~ 22:00 (L.O. 21:00)
■ TEL : 03-6233-7654
■ Number of seats : 10



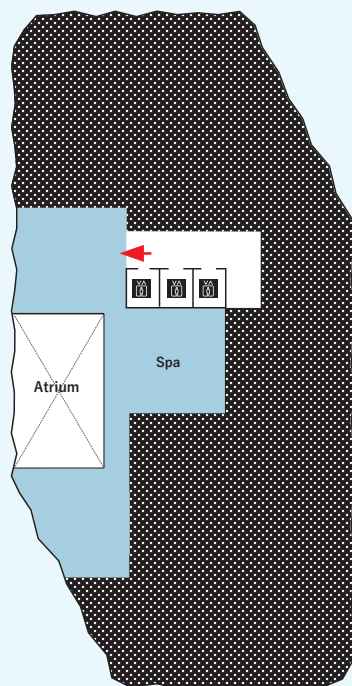
Sushi JIN-È

■ Business hours : Lunch 12:00 ~ 15:00 (L.O. 14:00)
Dinner 17:30 ~ 22:00 (L.O. 20:00)
※ Closed on Mondays (Lunch is open only on Saturdays, Sundays, and national holidays.)
■ TEL : 03-6233-7998
■ Number of seats : 9

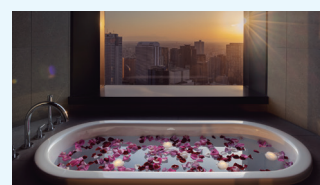
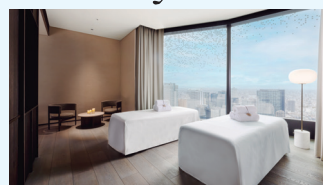
47_F

Spa SPA sunya

This is the sky spa located on the top floor of the hotel. At “sunya” meaning “zero” in Sanskrit, visitors are purified both physically and mentally, assume an “sky (zero)” mindset, and are relieved from everyday stress with deep peace of mind. The full menu of personal treatments stimulates the senses and satisfies the mind and body.



SPA sunya



SPA sunya

■ Business hours : 11 : 00 ~ 21 : 00
(Last entry 20 : 00)
■ TEL : 03-6265-9110

※The business hours are subject to change without prior notice. For details, please refer to the official website.